



NEW PADDOCK F1 GRAND PRIX DU CANADA
Circuit Gilles-Villeneuve, Montreal, Quebec



aerial view, Montreal archives, 1984

As part of a renewal agreement for the Formula 1 Canadian Grand Prix, the city of Montreal needs to replace the existing temporary structures with a permanent building that will accommodate the needs of the event. The new paddock will include garages for the racing teams, offices for the Fédération internationale de l'automobile (FIA) and the promoter, lounge space for 5000 people, and a multimedia center for journalists and broadcasters. All furniture and equipment are shipped from abroad and installed for the duration of the event.

The Circuit Gilles-Villeneuve on Notre-Dame island is on the former site of Expo 67 that has been transformed gradually into a park featuring various attractions such as a casino and a public beach, as well as an Olympic rowing basin and a military museum. The 4 km circuit is used extensively as an informal training track by amateur cyclists.

To facilitate the completion of the \$50M project within the 10 months separating the next two editions of the Grand Prix, the building is an assemblage of prefabricated parts including, concrete panels, steel beams and columns, CLT wood beams and panels, curtain wall and demountable partitions. It can also be dismantled and the material reused in case of termination of the car racing event.

In contrast with other international Grand Prix, lounge areas have no exterior walls and no air-conditioning, finishes are bare, solar panels provide electricity for lighting and the building tries to make responsible use of public money. The roof structure will distinguish the Canadian edition and give it an identity based on our collective desire to make a better use of one of our most important natural resources, reminiscence of the daring structures of Expo 67, and commitment toward sustainable development.



entrance view



racetrack view



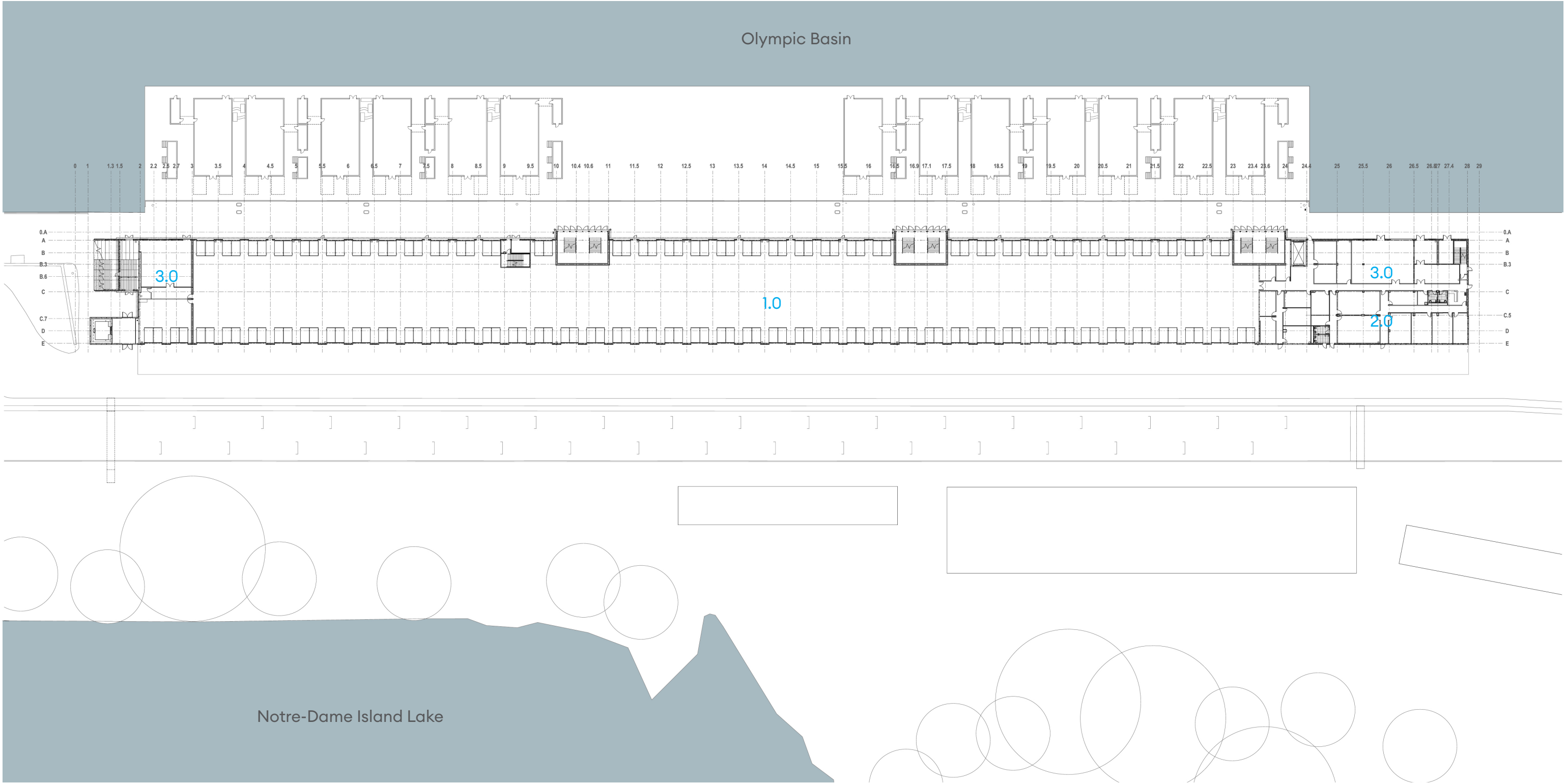
racetrack view



third level view

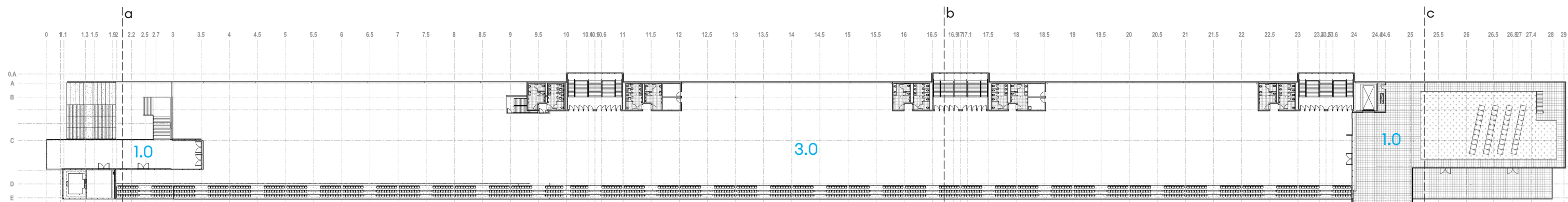


aerial view

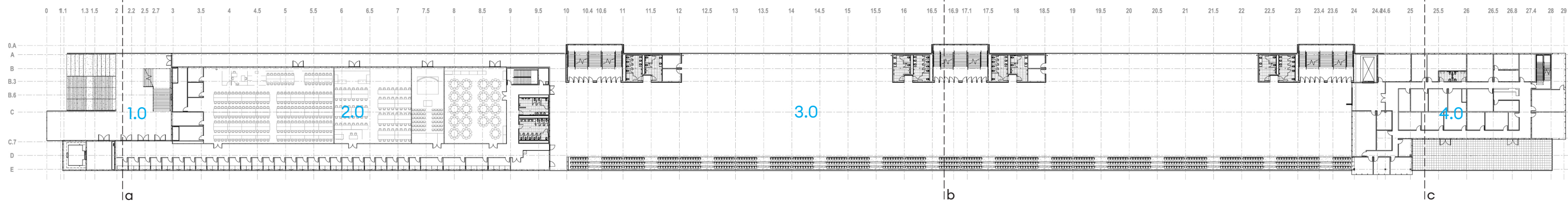


- 1.0 team garages
- 2.0 FIA and operations centre
- 3.0 MEP

site plan

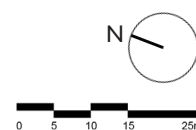


third level plan

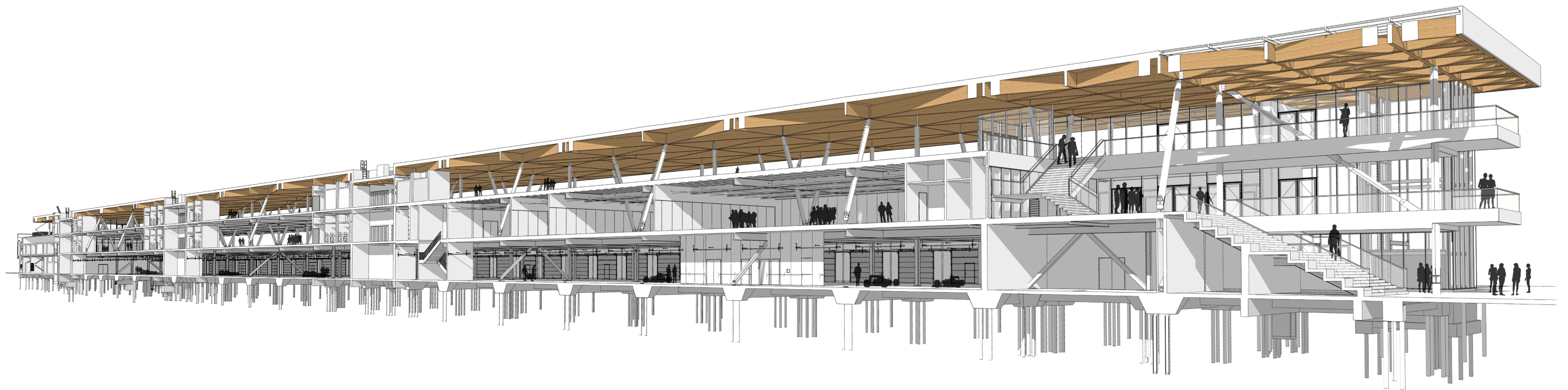


second level plan

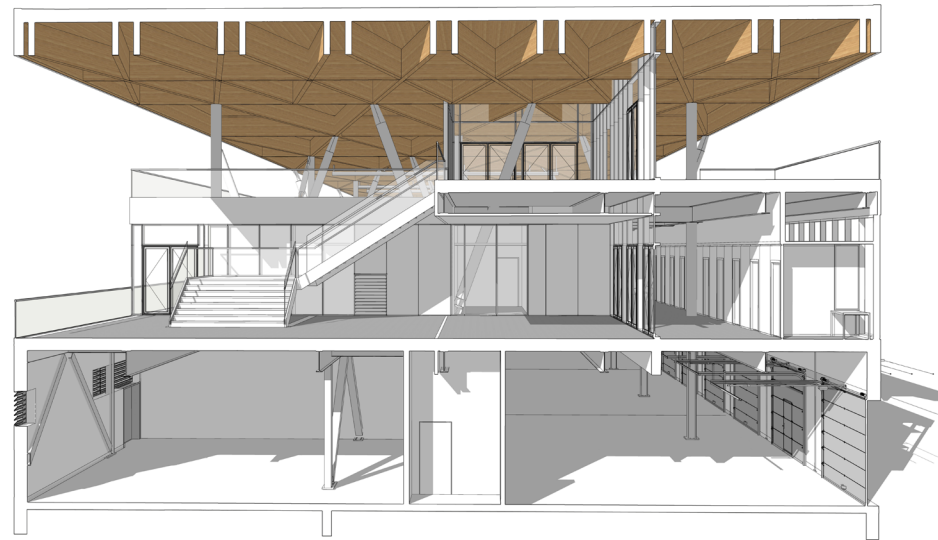
- 1.0 terrace
- 2.0 multimedia and broadcast centre
- 3.0 lounge space
- 4.0 operations centre



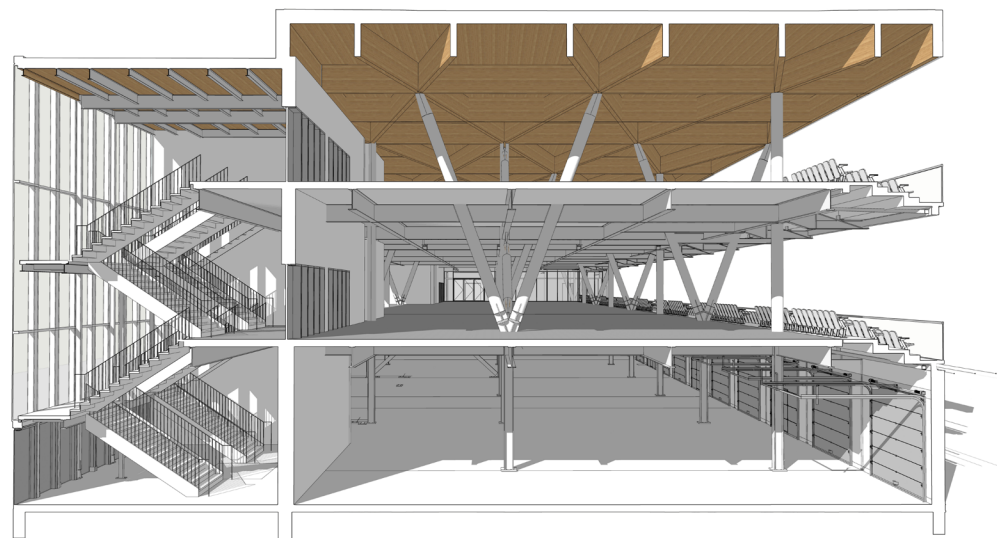
floor plans



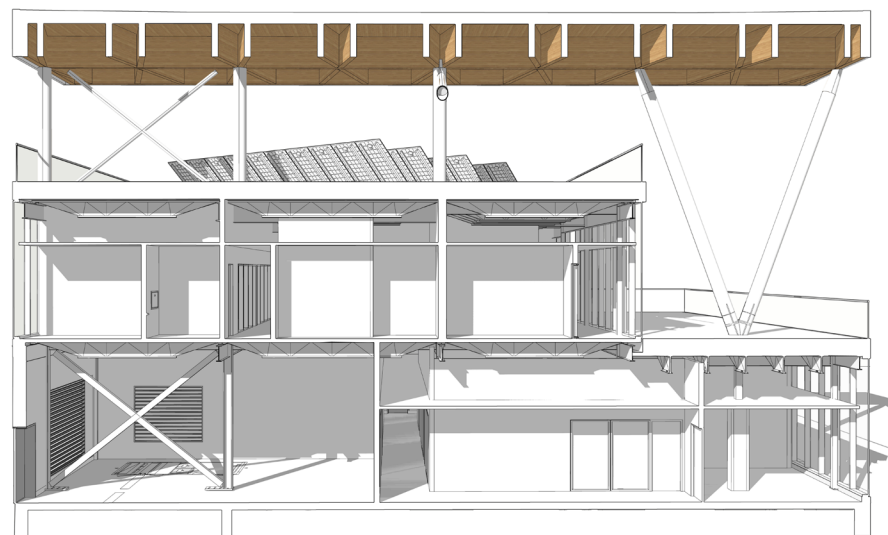
longitudinal section



a-a



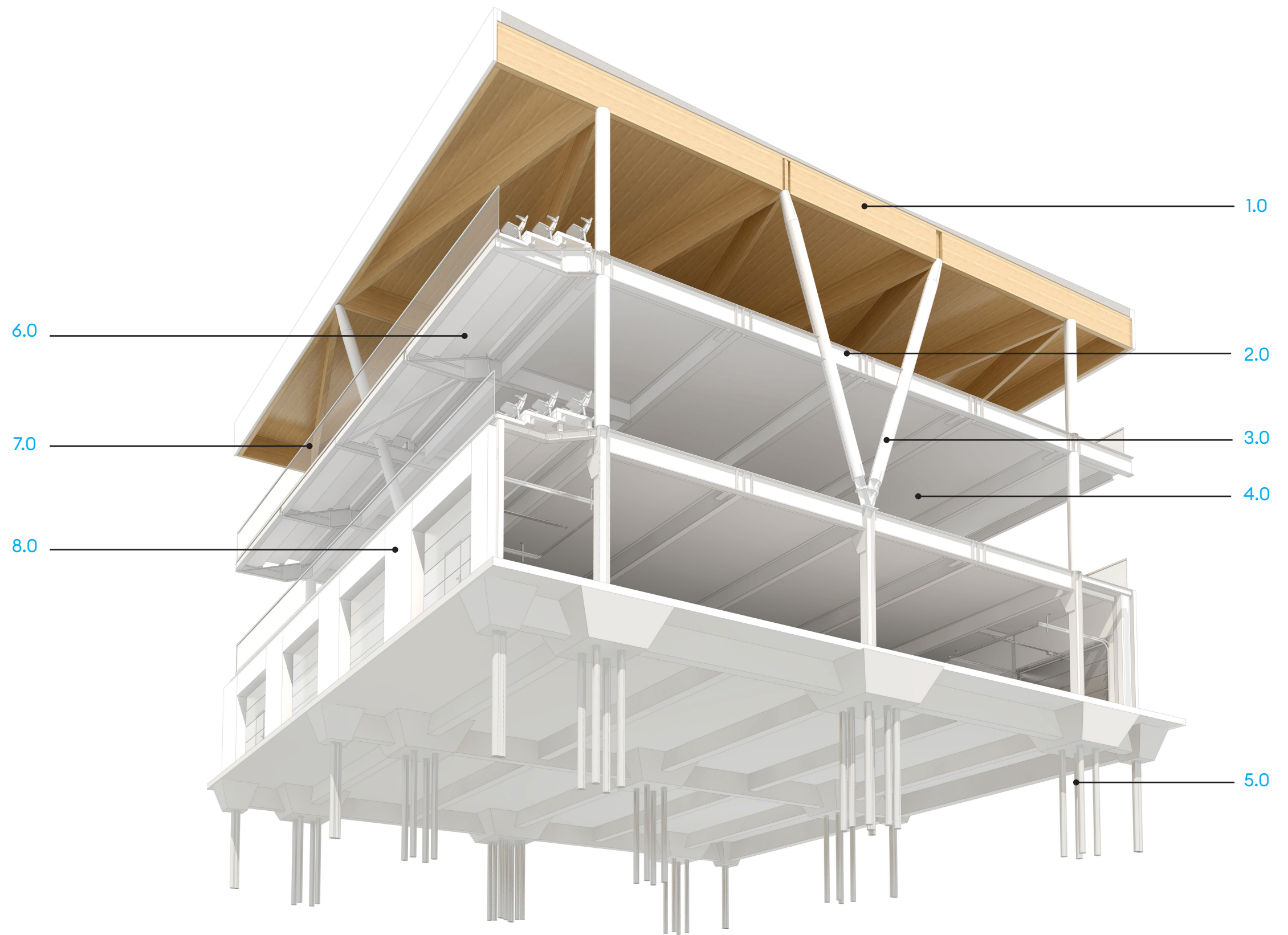
b-b



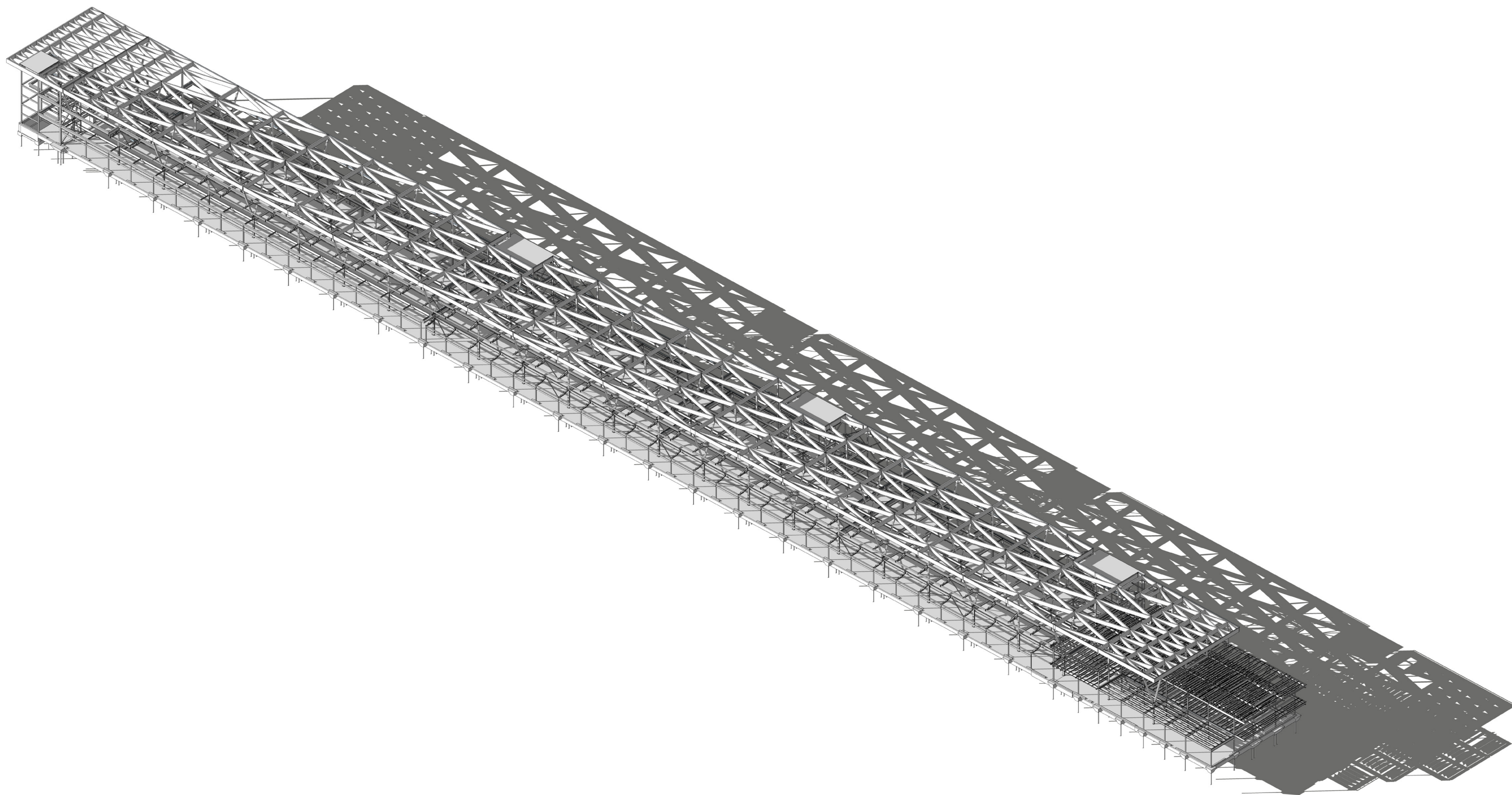
c-c

cross sections

- 1.0 CLT beams and panels
- 2.0 W610 steel beams
- 3.0 HSS Ø400 mm round tapered columns
- 4.0 200 mm concrete slab
- 5.0 pile foundations
- 6.0 prefabricated white concrete stands
- 7.0 laminated glass railing
- 8.0 prefabricated white concrete panels



section



axonometric view of the structure